



## CHESTERFIELD

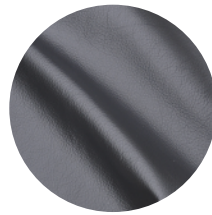
Chesterfield embodies everything a traditional leather should have. A light touch of two-tone effect provides a sense of depth and character that is perfect for any classic furniture piece. Chesterfield features a highly desirable smooth finish and is available in 10 sleek color options. Expect natural characteristics which prove the authenticity of this genuine leather.

### Details:

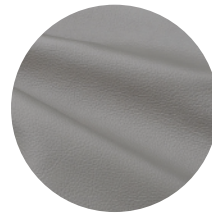
Finish Type: Semi-Aniline  
Content: South American Cowhide  
Country Finished: Brazil  
Size: 48 sq ft +/-  
Thickness: 0.9-1.1 mm

### Technical Information:

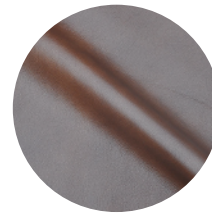
Adhesion (ISO 11644)	Pass
Rub Test (ISO 11640/11641)	
Dry	5
Wet	3/4
Sweat	3/4
Flex (ISO 5402) 50k	Pass
Light Fastness (ISO105-B02)	4
Cal 117-2013	Pass
NFPA 260	Pass
UFAC	Class 1



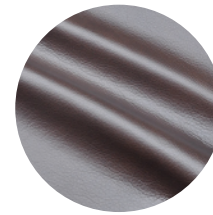
Black



Cobblestone



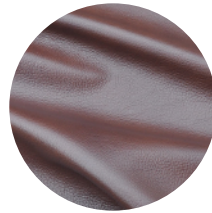
London Tan



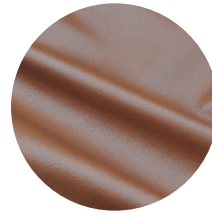
Mahogany



Merlot



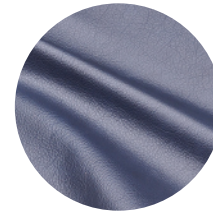
Pecan



Saddle



Walnut



Windsor Blue



This leather is produced on South American raw material which has brahma hide selection. Brahma hides will have a hole in the neck area. Insect bites, brands and healed scars might be present.